

THE FLEXIBLE BACK FLASHING

TRADE-FLASH is an extrusion formed using two flat portions of hard uPVC that are joined together by a soft uPVC hinge. The middle section makes the TRADE-FLASH sufficiently flexible to be used as a flat, internal or external back flashing.

TRADE-FLASH is available 2.7m long and in two widths. One width of 200mm with the soft uPVC hinge 100mm in from each side and the other is 130mm wide with the soft uPVC hinge 65mm in from each side.

TRADE CAVITY CLOSER is 2.7m long x 75mm high x 20mm x 20mm punched extrusion. Used above windows and at the cladding base to provide drainage and ventilation of the cavity. The 75mm upstand is punched for easy fixing.



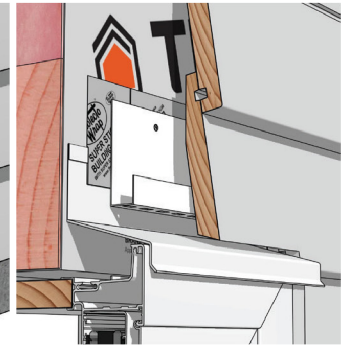
Internal Corners



External Corners



Wall



Windows

The Trade-Flash range offers a selection of premium concealed uPVC flashings. Designed with simplicity in mind to deliver solutions for a number of complex situations.

BENEFITS

- TRADE-FLASH has a flexible centre hinge that allows the flashing to be used as a flat, internal, external or at any angle back flashing
- TRADE-FLASH incorporates a return on the outer edge of the flashing to contain any moisture
- TRADE-FLASH is used behind exterior cladding junctions as a moisture barrier to ensure any water moisture that manages to get past the joint between the substrates is directed harmlessly to the outside of the dwelling
- TRADE-FLASH is easy to cut and fit on site
- TRADE-FLASH is manufactured from uPVC. This material has proven performance and shows compliance with NZBC Clause B2 Durability as detailed in B2/VM1