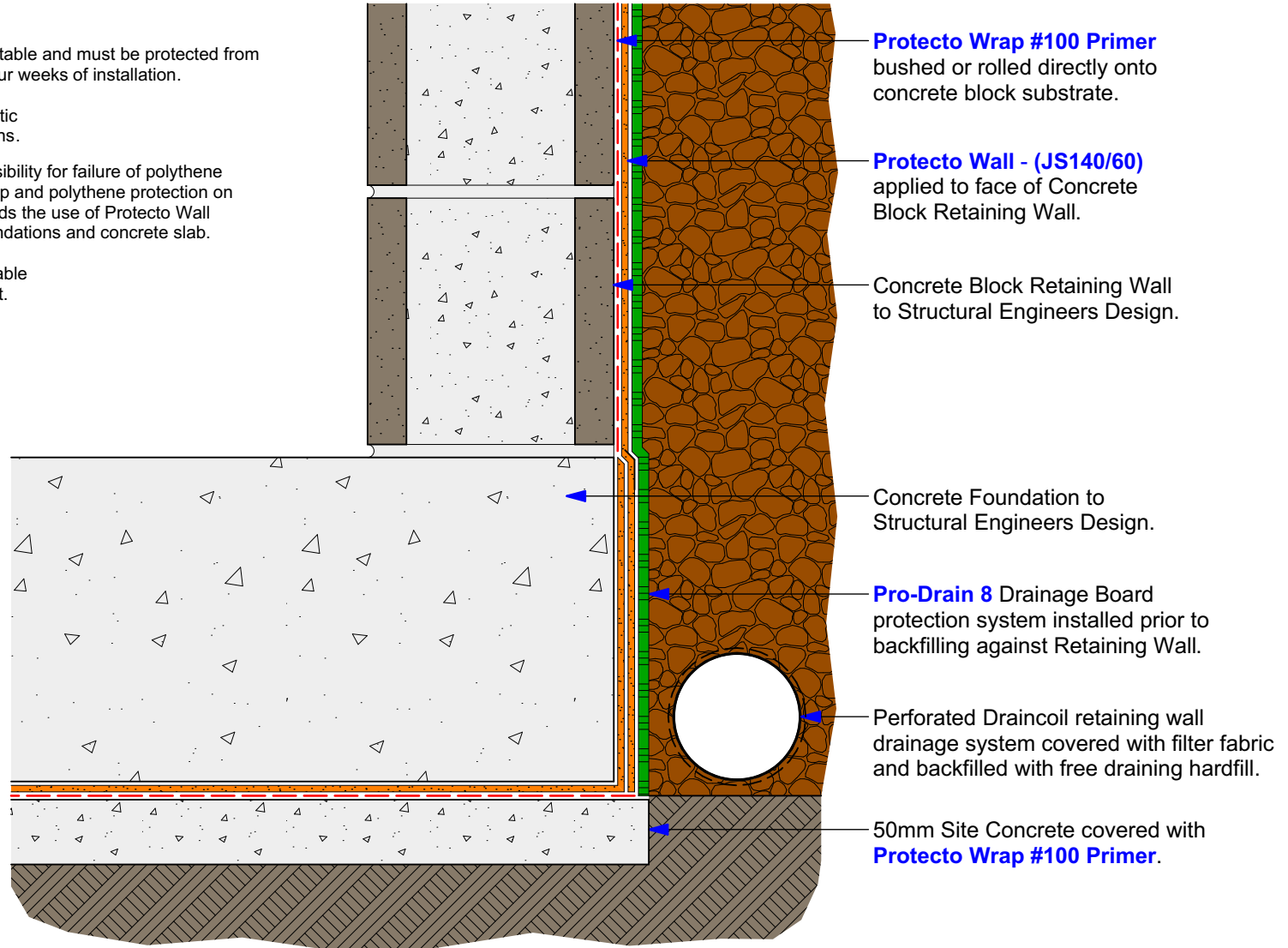


NOTES:

1. Protecto Wrap products are not UV stable and must be protected from sunlight. Permanently cover within four weeks of installation.
2. Provide Protecto Wrap JS-160H Mastic at all Membrane and Tape terminations.
3. Marshall Innovations take no responsibility for failure of polythene terminations due to poor workmanship and polythene protection on site. Marshall Innovations recommends the use of Protecto Wall Membrane continuous under the foundations and concrete slab.
4. The Protecto Wall System is not suitable where hydrostatic pressure is present.



Protecto Wrap #100 Primer brushed or rolled directly onto concrete block substrate.

Protecto Wall - (JS140/60) applied to face of Concrete Block Retaining Wall.

Concrete Block Retaining Wall to Structural Engineers Design.

Concrete Foundation to Structural Engineers Design.

Pro-Drain 8 Drainage Board protection system installed prior to backfilling against Retaining Wall.

Perforated Draincoil retaining wall drainage system covered with filter fabric and backfilled with free draining hardfill.

50mm Site Concrete covered with **Protecto Wrap #100 Primer**.



41 Hotuhotu Street
The Lakes, Tauriko
Tauranga
PO Box 9411
Greerton, Tauranga
Phone: 07 543 0948
Fax: (07) 541 1029
Email: headoffice@mwnc.com
Free Phone 0800 776 9727

Protecto Wall Membrane System

System Type:	Protecto Wall Retaining Flush Footing (Site Concrete)		
Scale:	1:5	Drawing No.	Revision:
Date:	Oct 2019	PW-103	A