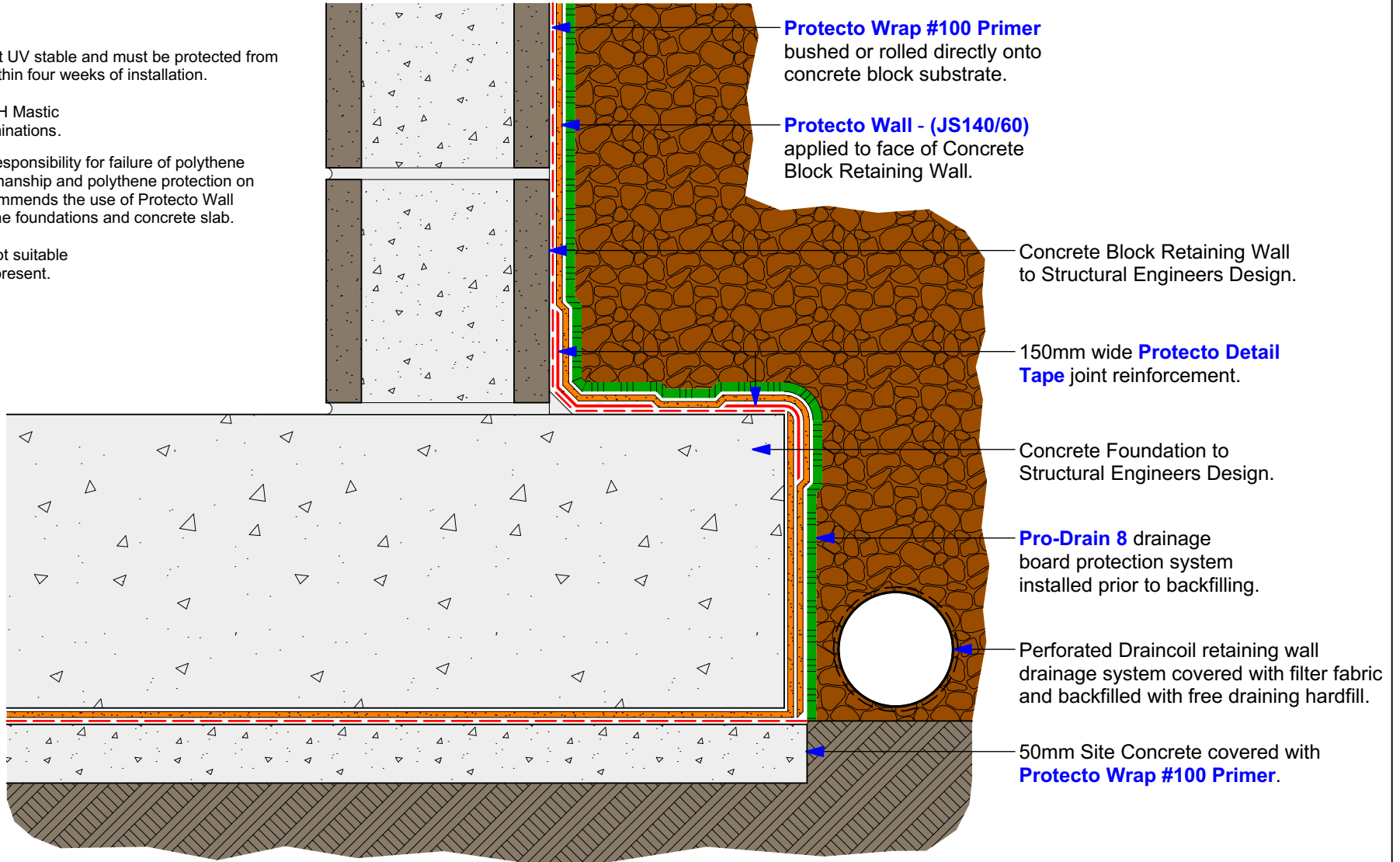


**NOTES:**

1. Protecto Wrap products are not UV stable and must be protected from sunlight. Permanently cover within four weeks of installation.
2. Provide Protecto Wrap JS-160H Mastic at all Membrane and Tape terminations.
3. Marshall Innovations take no responsibility for failure of polythene terminations due to poor workmanship and polythene protection on site. Marshall Innovations recommends the use of Protecto Wall Membrane continuous under the foundations and concrete slab.
4. The Protecto Wall System is not suitable where hydrostatic pressure is present.



**Protecto Wrap #100 Primer** brushed or rolled directly onto concrete block substrate.

**Protecto Wall - (JS140/60)** applied to face of Concrete Block Retaining Wall.

Concrete Block Retaining Wall to Structural Engineers Design.

150mm wide **Protecto Detail Tape** joint reinforcement.

Concrete Foundation to Structural Engineers Design.

**Pro-Drain 8** drainage board protection system installed prior to backfilling.

Perforated Draincoil retaining wall drainage system covered with filter fabric and backfilled with free draining hardfill.

50mm Site Concrete covered with **Protecto Wrap #100 Primer**.



**Marshall**  
Innovations  
Construction Solutions

41 Hotuhotu Street  
The Lakes, Tauriko  
Tauranga  
PO Box 9411  
Greerton, Tauranga  
Phone: 07 543 0948  
Fax: (07) 541 1029  
Email: headoffice@mwz.com  
Free Phone 0800 776 9727

**Protecto Wall  
Membrane System**

System Type:		Protecto Wall Retaining <b>Toe Footing (Site Concrete)</b>	
Scale:	1:5	Drawing No.	<b>PW-104</b>
Date:	Oct 2019	Revision:	<b>A</b>