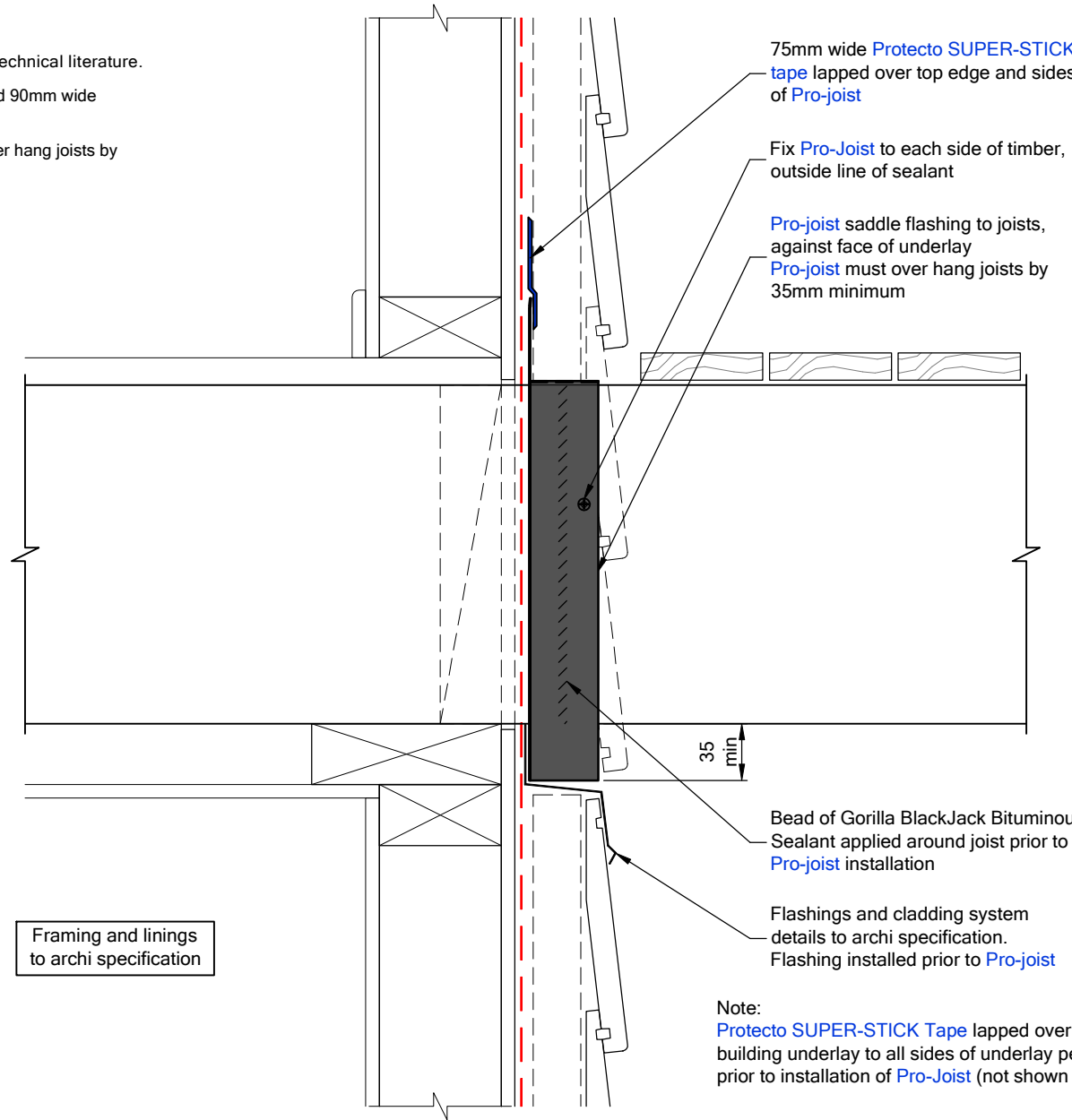


NOTES:

1. Always refer to the Appraisal in full and the technical literature.
2. Pro-Joist available to suit 45mm wide joists and 90mm wide (OR 2 / 45mm) beams up to 250mm deep
3. Pro-Joist height cut to suit joist depth, must over hang joists by 35mm minimum



75mm wide **Protecto SUPER-STICK** tape lapped over top edge and sides of **Pro-joist**

Fix **Pro-Joist** to each side of timber, outside line of sealant

Pro-joist saddle flashing to joists, against face of underlay
Pro-joist must over hang joists by 35mm minimum

35 min

Bead of Gorilla BlackJack Bituminous Sealant applied around joist prior to **Pro-joist** installation

Flashings and cladding system details to archi specification.
 Flashing installed prior to **Pro-joist**

Framing and linings to archi specification

Note:
Protecto SUPER-STICK Tape lapped over joist and building underlay to all sides of underlay penetration prior to installation of **Pro-Joist** (not shown for clarity)



Marshall
 Innovations
 Construction Solutions

41 Hotuhotu Street
 The Lakes, Tauriko
 Tauranga
 PO Box 9411
 Greerton, Tauranga
 Phone: 07 543 0948
 Fax: (07) 541 1029
 Email: headoffice@mmnz.com
 Free Phone 0800 776 9727

Pro-Joist

System Type:		Pro-Joist Saddle Flashing System	
		<i>Pro-Joist Detail</i>	
Scale:	1:5	Drawing No.	
Date:	Dec 2020		
		PJ-101	A