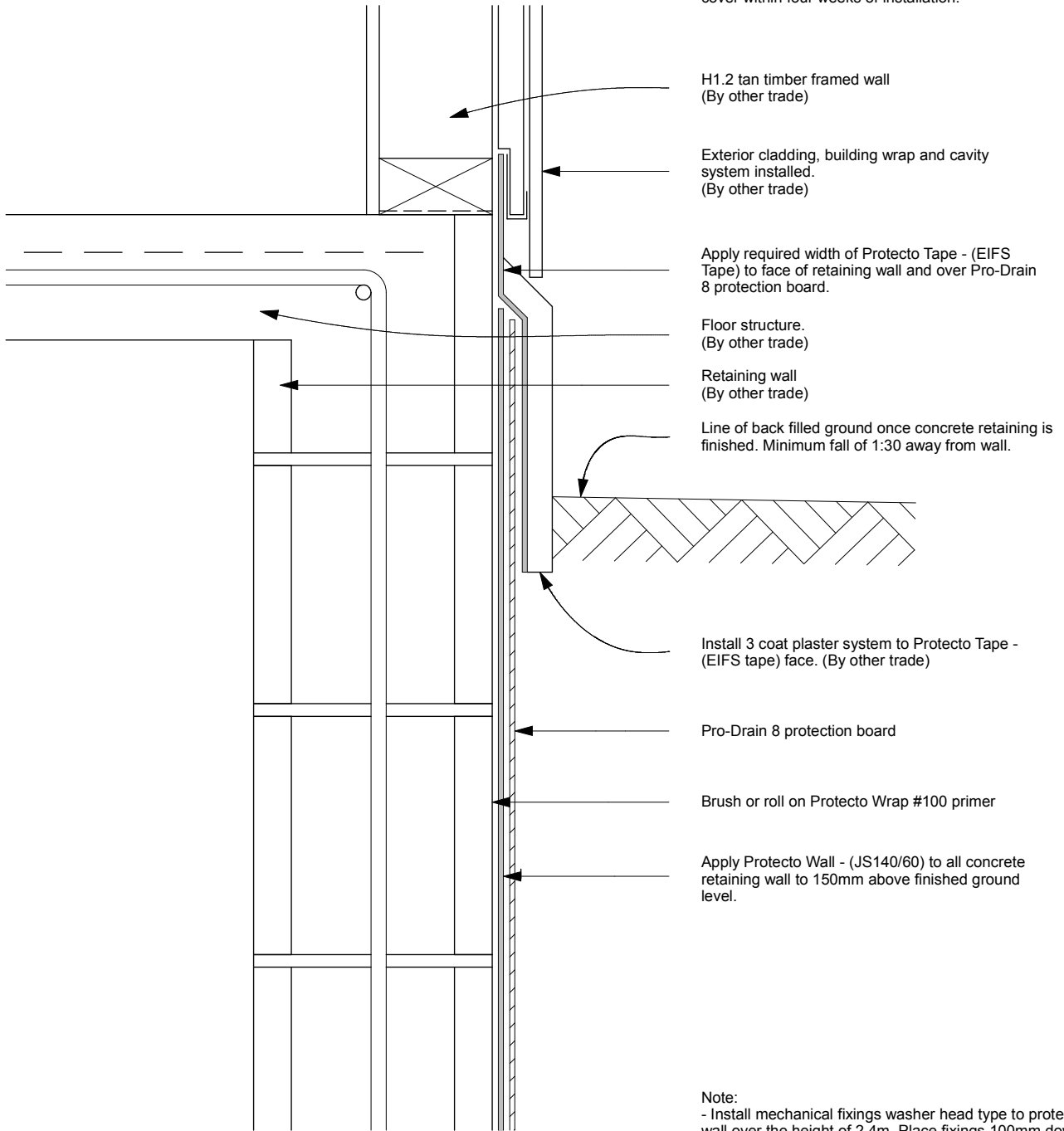


Note:  
 Protecto Wrap products are designed to be covered and are therefore not UV stable - cover within four weeks of installation.



Note:  
 - Install mechanical fixings washer head type to protecto wall over the height of 2.4m. Place fixings 100mm down from top @ 300mm cts.  
 - Blockwork must be flush not pointed.

concrete retaining wall  
 detail  
 scale  
 1:5

Protecto Wrap Specifiers Guide	Concrete retaining wall Protecto wall - JS140/60 / Detail Tape - JS500 Protecto Tape - EIFS (Section Details) <small>Technical specification subject to change without notice</small>	CAD Ref: PW06.4	Sheet :
		Date : June 2009	07.1.2
		Revision :	