

TRADE-FLASH THE FLEXIBLE BACK FLASHING

PRODUCT DESCRIPTION

TRADE – FLASH is an extrusion formed using two flat portions of hard uPVC that are joined together by a soft uPVC hinge.

TRADE – FLASH is used behind exterior cladding junctions as a moisture barrier to ensure any water or moisture that manages to get past the joint between the substrates is directed to the outside.

TRADE – FLASH is available 2.7m long and in 2 widths. One width of 200mm with the soft uPVC hinge 100mm in from each side and the other is 130mm wide with the soft uPVC hinge 65mm in from each side.

TRADE – FLASH incorporates a 6mm return on the outer edge of the flashing to contain any moisture

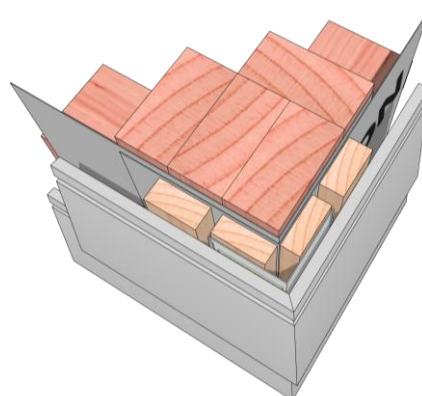
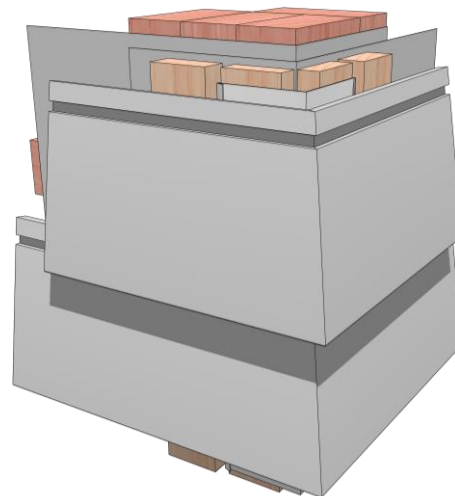
FEATURES AND BENEFITS

The hinged middle section makes the TRADE-FLASH sufficiently flexible to be used as a back flashing at any angle.

TRADE - FLASH flexibility allows it to be used as a flat, internal or external back flashing.

TRADE-FLASH is a one component secondary water ingress protection system for back flashing behind cladding junctions.

TRADE-FLASH is easy to cut and install.



TRADE - FLASH THE FLEXIBLE BACK FLASHING

INSTALLATION

Cut TRADE – FLASH to the required length.

Fix through the flashing and seal the penetrations with a neutral cure sealant or a patch of Marshall Waterproofing Sill tape.

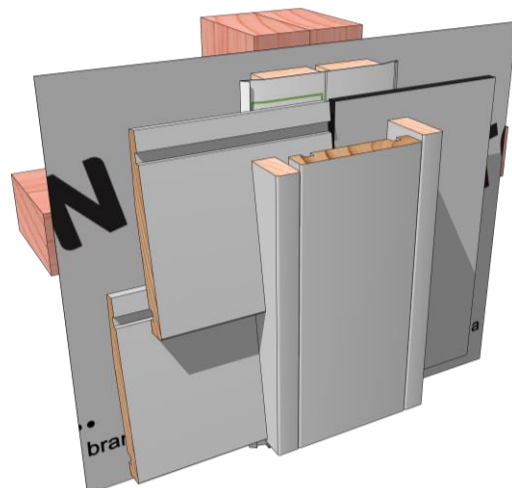
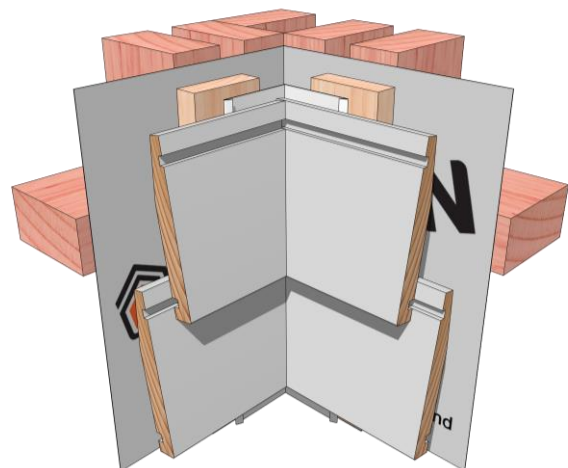
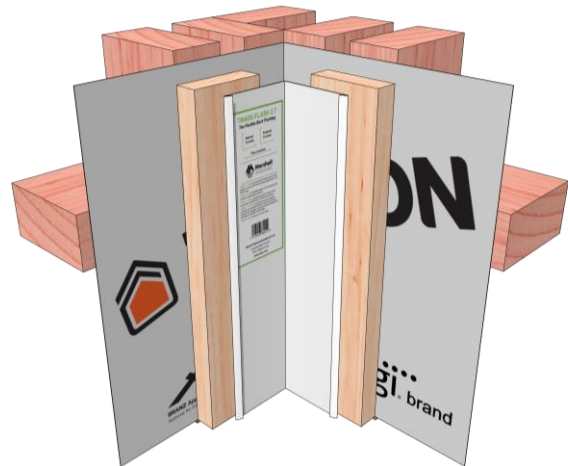
When joining TRADE-FLASH an overlap of 150mm is required.

DURABILITY

Provided it is not exposed to the weather or ultra-violet light for more than 90 days TRADE-FLASH will meet the requirements of the building code.

STORAGE

Store in a dry place at temperatures between 10° C and 32° C. Do not store in direct sunlight.



TRADE - FLASH THE FLEXIBLE BACK FLASHING